

UL 325 2018  
COMPLIANT

UL 991  
COMPLIANT



INTEGRATED  
BATTERY BACKUP

MAINTENANCE FREE  
BRUSHLESS DC MOTOR

ADJUSTABLE TORQUE  
LIMITER

OPTIONAL PAD OR  
POST MOUNT

EASY SLIDE QUICK  
RELEASE ARM

## SW-325 DC

SWING GATE OPERATOR



COMMERCIAL/INDUSTRIAL  
APPLICATIONS

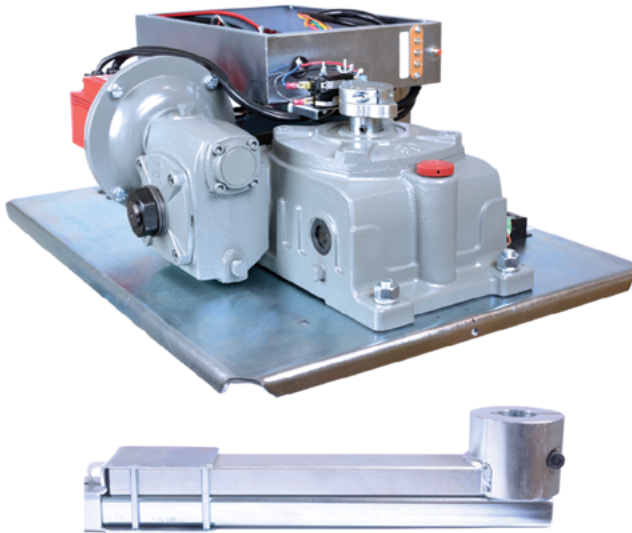
SLIDERS | SWINGERS | OVERHEADS

The standard by which all other **automatic gate operators** are measured

## SW-325 DC

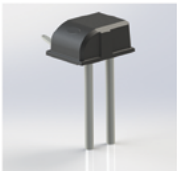
### SWING GATE OPERATOR

## SPECS

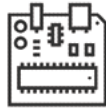


#### UL 325 2018 Compliant

<b>Max Gate Weight</b>	2,000 lbs.
<b>Max Gate Length</b>	22 feet
<b>Warranty</b>	7 year residential - 5 year commercial
<b>Motor</b>	24 VDC brushless – ½ HP motor
<b>Gate Speed</b>	Adjustable 14-25 seconds per 90° opening
<b>Power Options</b>	115/230 VAC single phase and 24 VDC solar panel
<b>Duty Cycle</b>	Continuous
<b>Battery Back Up</b>	Integrated, with (2) 7Ah 12VDC batteries
<b>Battery Back Up Capacity</b>	Up to 250 cycles
<b>Temperature Range</b>	-40 to 160°
<b>Gearbox Ratio</b>	750:1 with internal clutch
<b>Width X Length X Height</b>	19" X 25.5" X 21"
<b>Shipping Weight</b>	160 lbs. + 30 lbs. arm
<b>Emergency Release</b>	Easy slide quick release arm
<b>Belt Size</b>	N/A
<b>Main Sprocket Size</b>	N/A
<b>Chain Size</b>	N/A
<b>Gearbox Sprocket</b>	N/A
<b>Limit Shaft Sprocket</b>	N/A
<b>Breaker Requirement</b>	20 amp dedicated
<b>Gearbox Pulley</b>	N/A
<b>Motor Pulley</b>	N/A



POST MOUNT



CONTROL BOARD WITH  
ARRAY OF FEATURES



BRUSHLESS DC MOTOR  
CONTINUOUS DUTY 24V 1HP



GEAR BOX  
WITH INTERNAL CLUTCH

The Warrantor warrants the SW-325DC Gate Operator. ALL-O-MATIC INC warrants its gate openers for a period of five (5) years in commercial installations, and for a period of seven (7) years in residential installation to be free from defects in circuitry, motor, gear box and workmanship. This warranty applies from the date of purchase to the original owner. Warrantor will repair or, at its option, replace any device which it finds to require service. This device must be sent to the warrantor at the consumer's expense. The warrantor will return the repaired or replaced unit to the customer at the consumer's expense. Labor charges for dealer service or replacement are the responsibility of the owner. These warranties are in lieu of all other warranties either expressed or implied, and ALL-O-MATIC INC shall not be liable for consequential damage. All implied warranties of merchantability and or fitness for a particular purpose are hereby disclaimed and excluded. This limitation is not valid in jurisdictions which do not allow limitation of incidental or consequential damages or limitation of warranty periods. Caution in order to obtain this policy, please complete the registration card and send it by mail within 30 days of purchasing from ALL-O-MATIC INC. or your INSTALLER. If not registered only a one year warranty on all parts will be provided.